

1) Exit the Hyatt Hotel to the left. Go around the big truck (if there is one) and the cable car (if there is one) and **go down into the entrance to the BART/Muni Metro station** next to Market St.

Once in the station, get \$1.50 in change from a BART ticket machine, go through the Muni Metro turnstiles, and go down the escalator to the **Outbound** platform. **Get on an N-Judah train heading to Ocean Beach.** The train will pass several underground stations before coming above ground. Then, the train will be above ground for two stops before going through a long tunnel. After the tunnel, it is roughly four stops to UCSF, depending on how many stops are requested.

2) The N-Judah Muni Metro outbound train will go around a zigzag as it goes from Carl St. to Irving St. The next stop is the one for UCSF.

3) Get off the N-Judah at the UCSF outbound stop, cross Irving St. to the UCSF parking garage, cross in front of the car entrances, then follow the covered walkway into the garage to the elevators.

4) Take the elevator to the top ("T" level of the Millberry Center), then go down the hall to the stairs (there is an information booth in front of these stairs).

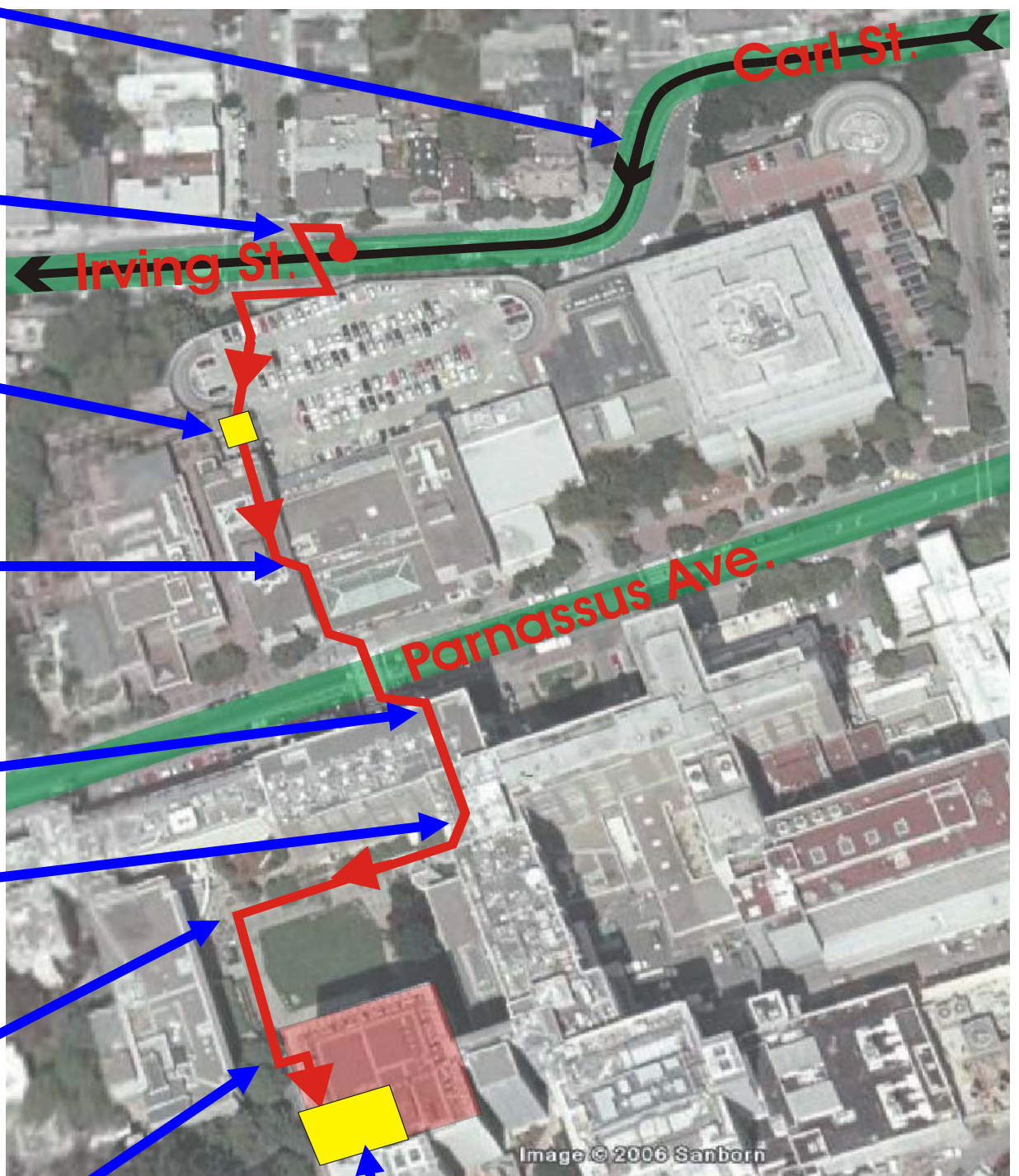
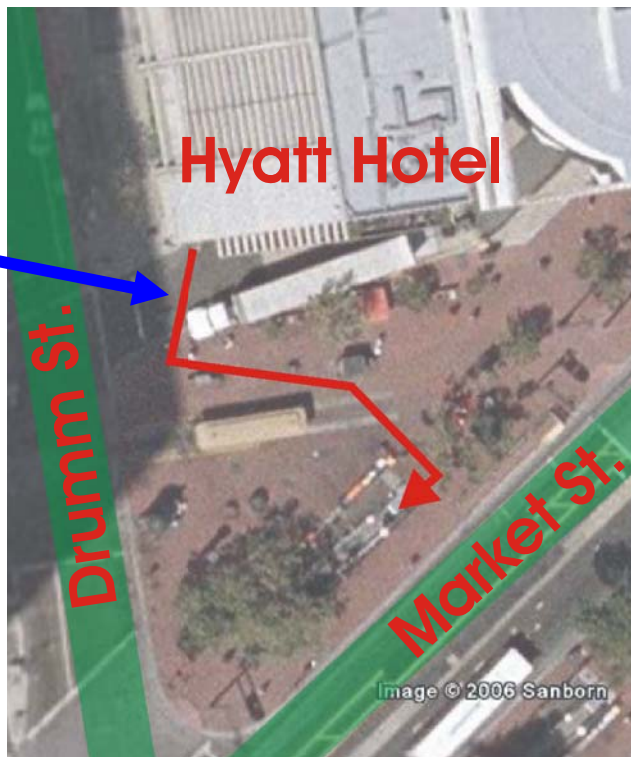
5) Go up the stairs to the top level of the Millberry Center, go out to Parnassus Ave. and cross the street to the Medical Sciences building, whose entrance is the glass doors up the steps in front of you.

6) Go in the Medical Sciences building (513 Parnassus Ave.), then walk down the hall in front of you until you get to steps going up to the right.

7) Go up these steps, and then go out the glass doors in front of you to Saunders Court

8) Once in Saunders Court, walk straight ahead until the School of Nursing building is right in front of you, then go up the walkway to the left until you reach the steps up to the entrance to the Health Sciences West building.

9) Go in this entrance to the Health Sciences West building, then immediately turn right: room 301 will be right in front of you.



**Health Sciences West
Room 301**

